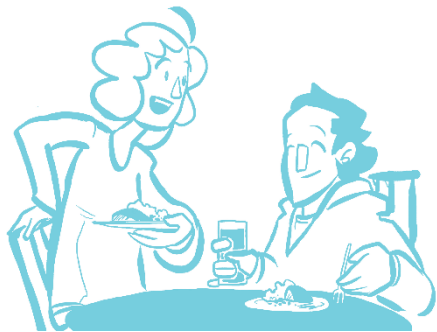


## Volunteers:

- The church needs the hands of all people to thrive.
- People are encouraged and invited to volunteer their time.
- There are short term commitments, and we encourage you to try different roles to fulfill your passion.
- There is a sign-up sheet in Memorial Hall, listing the date, time and the specific volunteer roles that are available. When the task is done, you are done.
- In the Church we have some elected leadership positions for the board, and we have other key leadership roles that help to coordinate all the programs and events that happen throughout the year. Most leadership roles are time specific (one- time event, one hour a month) or no more than a 2-year commitment.
- When a leadership role is vacant, it will be advertised on the Website and in the R-W Report and E-news.



## The Robertson-Wesley Board:

The board is made up of elected positions which include: Board Chair, In-coming chair, past chair, treasurer, secretary, Chair of Ministry and Personnel, Chair of Property, Ministers, and Northern Spirit Regional Reps.

- They keep the church moving in accordance with mission and ensure all groups and functions are staffed/filled and adequately empowered, while holding groups and leaders accountable.
- They facilitate the mission of the church and empower the congregation to live that mission.
- They embody servant leadership through knowledge, discernment, and living the mission while holding operations functionalities of the church in mind.

## Staff:

The staff of the church are a key resource to the congregation. With the leadership of our Facilities Manager, the Office Administrator, and the Financial Manager we strive to provide a safe, up to date, well maintained space for the congregation and the community. The Ministers provide pastoral care, worship, and spiritual leadership to the mission and ministry of the church. The Music Director enhances our worship and the music of the church through choral groups, worship and recitals.

## Committees:

A *Committee* is a set group of people with a chair person who meet regularly (either monthly or quarterly) with a specific mandate. When a committee meets they take minutes and then review the minutes from the last meeting.

We have several *Standing Committees* these include: Ministry and Personnel, Property, Gratitude Team, Finance, Outreach, Worship, Family Ministries.



## DEAP – Discernment, Envisioning, and Policy

DEAP is a group of people who meet monthly to discern together where the Spirit is at work in our faith community. The role of this group is to listen, and observe where there is passion in our midst as well as noticing where there are challenges. DEAP then reflects back to the congregation what they are hearing and noticing. Through this process of discernment the community of faith is able to engage in long range visioning and planning.

## Pods:

A *Pod* is a gathering of people who engage in conversation about specific topics or areas of ministry and mission that arise.

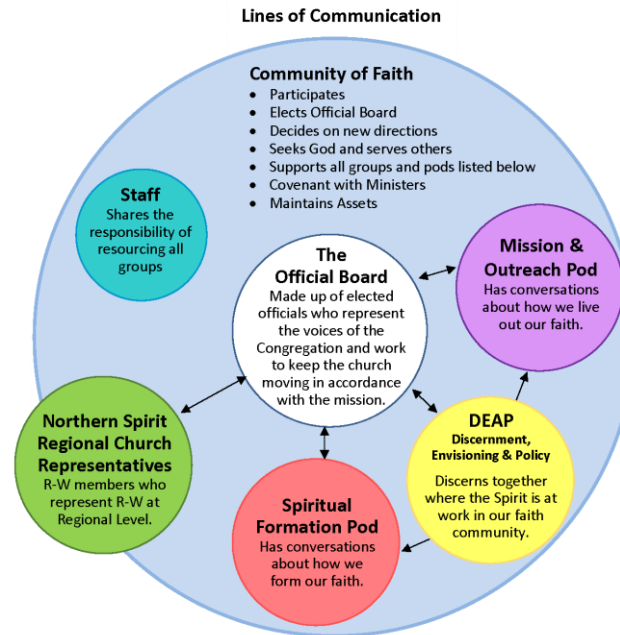
- The *Pod* is coordinated by one person with one minister designated as staff support. A Pod conversation/gathering is by the call of the pod coordinator as needs, issues and ideas arise.
- If a project, event, or idea emerges from the community of faith, then people who are interested are empowered to take on this work with no requirement of a set number of meetings.
- The group gathered is encouraged by the Pod coordinator to communicate with the congregation about what they are doing.

### *Spiritual Formation Pod*

The *Spiritual Formation Pod* has conversations about how we form our faith, and what programs and events will help us learn about God, Jesus and the Holy Spirit. How do we worship, learn, and deepen our spirituality?

### *Mission and Outreach Pod*

The *Mission and Outreach Pod* has conversations about how we live out our faith in the world. This pod explores issues of social justice and oppression and seeks to find ways to address needs in our community and the world.



## Who does the work of the church?

*The board, pods, and committees*



## The faith community is the people!

**Robertson-Wesley United Church**  
10209-123 Street Edmonton, AB T5N 1N3  
Ph: 780-482-1587  
Email: [mail@rwuc.org](mailto:mail@rwuc.org)  
Web: [www.rwuc.org](http://www.rwuc.org)



[www.facebook.com/RobertsonWesley](http://www.facebook.com/RobertsonWesley)  
[www.twitter.com/RWUC](http://www.twitter.com/RWUC)