

Community Dinner

Responding to a growing need in our neighbourhood, R-W started the Community Dinner program in 1997. On the second Saturday of the month, 100 to 150 people are welcomed to Memorial Hall for a free dinner, often accompanied by entertainment. We share in this ministry with Christ Church Anglican to ensure there is a hot meal served in our community twice a month. Each church hosts a special Christmas dinner on the first Saturday of December. Volunteers plan, purchase, prepare and serve food, and clean up afterwards. A volunteer sign-up sheet is maintained in Memorial Hall. This program is funded through the Helen Mack Trust Fund.

Food Bank Depot

In the '80s, with a sharp downturn in the Edmonton economy, the need for a food bank became apparent. A member of R-W was a founding member of the Edmonton Food Bank, Canada's first. It is thus no surprise that R-W has been a food bank depot for over 30 years. Volunteers operate the morning phone-in service, unload the truck, confirm ID, distribute food, as well as socialize with and welcome clients.

Magic Pantry

As a church in the diverse Oliver community (on the fringe of the inner city), we often encounter people who are unable to afford enough food and who need additional meals throughout the week. Typically, these people are unable to access the services of the Food Bank. In response to this need, we established the Magic Pantry, a unique program providing a nutritious, portable ready-to-eat lunch.

Inner City Partnerships

Operation Friendship is a program ensuring that difficult-to-house inner city seniors are fed hot lunches and provided a space for gathering and conversation. We provide money, food and servers for four hot meals at McCauley Seniors' Drop-In Centre each June through September.

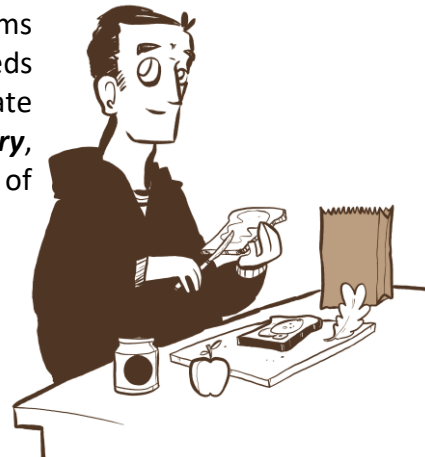
Robertson-Wesley has also had a long involvement with the **Bissell Centre**, where many in our congregation work as volunteers in various capacities. Each year, volunteers donate time and specific items to help the Bissell Centre meet the needs of their clients. In addition, we participate in the **Inner-City Pastoral Ministry**, providing lunches and serving at some of the Sunday services.

Choral Morphosis

We are excited to fund the Choral Morphosis program at R-W. This is a choir for developmentally challenged adults. The program offers fellowship, companionship, and the opportunity to create and express.

Refugees

In the late 1970s, Vietnamese refugees began pouring into Canada. In response, R-W sponsored the first of our refugee families, working hard to raise money and help them rebuild their lives. In the intervening years, we have sponsored and assisted people from a number of countries, including Kosovo, Somalia, and Syria. In recent years, more delays and difficulties have made sponsorship challenging. Nevertheless, in 2016, we had success in co-sponsoring a family of 13 from Syria. We continue to respond to and assess requests, and are open to new sponsorships, either alone or in partnership with others.



Truth and Reconciliation

The church is continuing to engage in the work and learning in order to move forward with reconciliation. With the help and wisdom of Evelyn Day (an indigenous elder) and David Elliot we will continue to engage in implementation of the calls to action of the Truth and Reconciliation Commission. There will be conversation, book and movie studies, along with exercises like the Blanket Exercise.

Other Outreach Programs offered at R-W:

- Messy Wednesday – a free meal for families with children
- Spirited Art Studio – a free space for people to engage in the arts
- Art Therapy – we are a practicum site for Art Therapy Students at St. Stephen's College which allows us to offer free art therapy to people in need
- Free Yoga classes weekly



Helping others

In Matthew's gospel, we read: "What you do to the least of my sisters and brothers, you have done to me." This invitation of Jesus to reach out to those in need and work to overcome injustice is a hallmark of Robertson-Wesley (R-W). In various ways we put this message of Jesus into action - with our hands, our pocketbooks and our hearts.

Our History

The congregations of both Robertson and Wesley had long histories of outreach work. With women like Nellie McClung as members, it's no wonder helping others is in our blood. Each generation has rallied around a concern, be it women's suffrage, helping refugees, or advocating for the poor. The work of R-W Outreach has been funded by congregational and community donations, fundraisers, and the proceeds from established church trust funds.

Mission and Outreach remains a special passion of our congregation. R-W is located within a diverse community, providing us with unique opportunities to serve and to share. We also seek to meet needs of the broader global community.



Getting Involved ...

Reaching out requires new ideas and new energy. There are many ways to get involved. One way is to participate as a member of our Outreach Committee. We meet at 9:00 a.m. on a Sunday of approximately 4 times a year to maintain our long-term projects, and develop and discuss new ones. Our Mission and Outreach Pod provides another avenue of participation, for those preferring a more informal involvement. The Pod, which meets periodically, allows participants to suggest and develop creative ways of doing Outreach that are more project based or one time opportunities. There are sign-up sheets in Memorial Hall for project-oriented tasks.

Further information about Robertson-Wesley Mission and Outreach can be found on our website (www.rwuc.org) or by calling the church office at 780-482-1587.

10209-123 Street
Edmonton AB T5N 1N3
Ph: 780-482-1587
Email: mail@rwuc.org
Website: www.rwuc.org

Follow us:

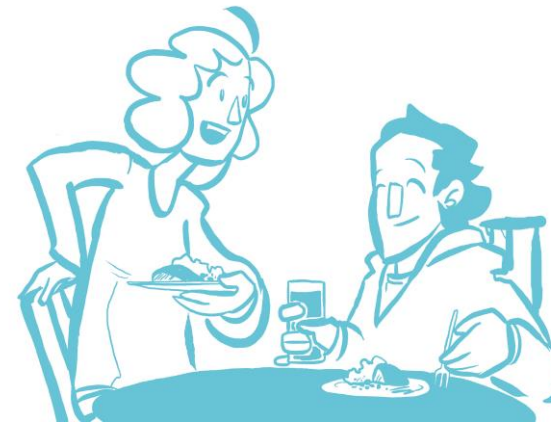


www.facebook.com/RobertsonWesley
www.twitter.com/RWUC

Last updated Aug 2018



Mission & Outreach



Caring for the Community



Mission and Outreach and acting on our faith

As a church we are committed to reaching out to others in our local and global community. We continue to seek ways to enter partnerships with our neighbours, with other social agencies, political leaders, and other faith communities in hopes of meeting the needs of all people and sharing in the abundance of what we have received.

Being a faithful, safe and sacred presence as well as an advocate for the oppressed in this community and the city of Edmonton is a priority for us. We take time to listen to the needs of the people around us rather than making assumptions about what people need. The Mission and Outreach Pod takes time throughout the year to engage important justice issues, and we gather to discern what God is calling us to do.

We truly believe that the city is our church and thus we are called to not only open our doors to the community, but also to be engaged in our community.